

# **INSTALLATION & OWNER'S MANUAL**



## **⚠ WARNING**

**DO NOT INSTALL, OPERATE OR SERVICE THIS PRODUCT UNLESS YOU HAVE READ AND FULLY UNDERSTAND THE ENTIRE CONTENTS OF THIS MANUAL. FAILURE TO DO SO MAY RESULT IN PROPERTY DAMAGE, BODILY INJURY OR DEATH.**

## NOTES



# TABLE OF CONTENTS

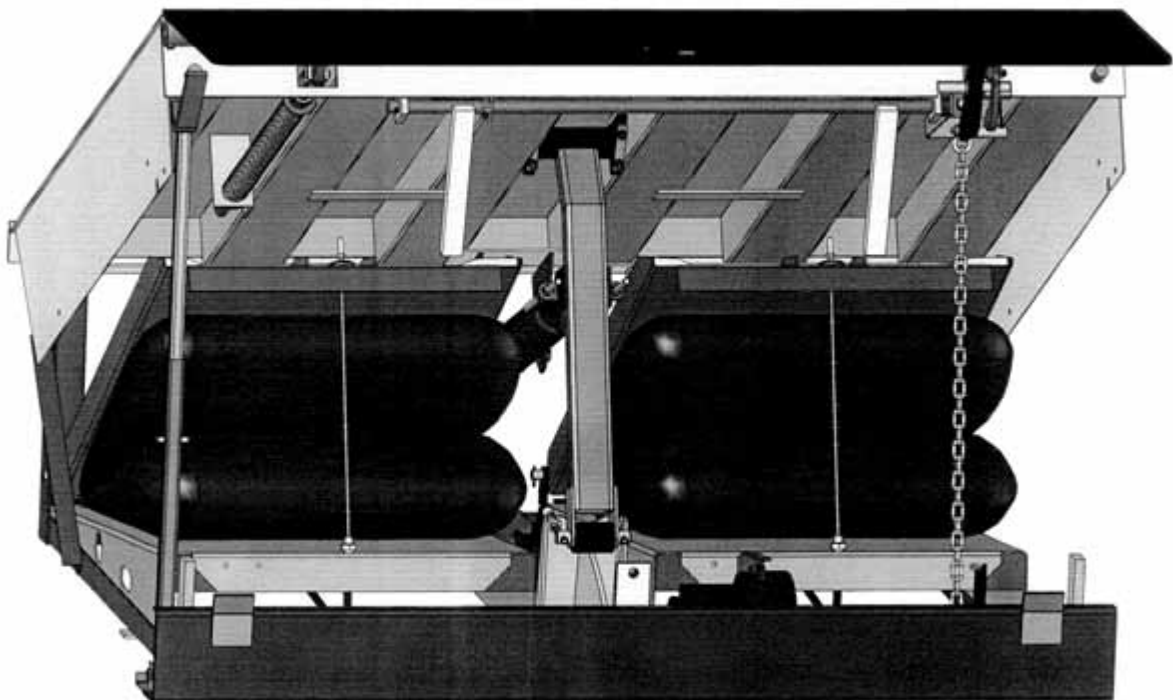
1.	<b>ABOUT THE U-SERIES AIRBAG DOCK LEVELER</b> .....	1
	1.1 Owner's Purchase Record.....	1
2.	<b>INTRODUCTION</b> .....	2
	2.1 Warranty Information.....	2
	2.2 Exclusion of Liability.....	2
	2.3 Manufacturer's Note.....	2
3.	<b>OPERATOR'S MANUAL SAFETY MESSAGE COLOR IDENTIFICATION</b> .....	3
	3.1 Operational Safety Warnings.....	3
4.	<b>LOCKOUT / TAGOUT PROCEDURE AND RULES</b> .....	4
5.	<b>STANDALONE DOCK ARRANGEMENT</b> .....	5
6.	<b>DOCK LEVELER INSTALLATION INSTRUCTIONS</b> .....	6
	6.1 Installation Inspection.....	7
7.	<b>OPERATING INSTRUCTIONS</b> .....	8
	7.1 Functional Description.....	8
	7.2 Deploying the Dock Leveler.....	8
	7.3 Storing the Dock Leveler.....	8
	7.4 Below Level / End Loading.....	8
8.	<b>MAINTENANCE</b> .....	9
	8.1 Planned Maintenance.....	9
	8.2 Operator Daily Inspection.....	9
	8.3 Routine Servicing and Maintenance.....	9
	8.4 Planned Maintenance Intervals.....	9
	8.5 Maintenance Sequence.....	9
	8.6 PM Checklist- Dock Equipment.....	10
9.	<b>DOCK GENERAL ASSEMBLY COMPONENTS- 6' DOCK</b> .....	11
10.	<b>DOCK GENERAL ASSEMBLY COMPONENTS- 8' DOCK (6' WIDE X 8' LONG)</b> .....	12
11.	<b>DOCK GENERAL ASSEMBLY COMPONENTS- 8' DOCK (6'6 WIDE X 8' LONG, 7' WIDE X 8' LONG)</b> .....	13
12.	<b>DOCK GENERAL ASSEMBLY COMPONENTS- PLATFORM</b> .....	14
13.	<b>RECOMMENDED SPARE PARTS LIST</b> .....	16
14.	<b>TROUBLESHOOTING</b> .....	17

**1. ABOUT the U-SERIES AIRBAG DOCK LEVELER with SINGLE PUSH BUTTON CONTROLS**

The **U-Series Airbag Dock Leveler** combines Blue Giant’s advanced, environmentally friendly air lifting system with the same durable structural design that has made Blue Giant a global leader in the design, manufacture, and distribution of loading dock systems.

Supported by a minimum of six heavy-duty U-beams, the airbag dock leveler has a high-volume, low-pressure air lifting system that presents an eco-friendly alternative to oil-powered hydraulics. When activated via the single push button control station, the air bags inflate, raising the deck. After the button is released, the bags deflate, allowing the deck to lower smoothly onto the trailer bed.

The airbag dock leveler operates safely and efficiently under the toughest conditions: temperature extremes, heavy usage, and exposure to caustic substances. The deck flexes under load to allow a smooth cross-docking transition, minimizing the risk of worker injury and cargo or equipment damage. The fall-safe system provides additional protection by limiting platform free-fall.



**1.1 OWNER'S PURCHASE RECORD**

<b>OWNER'S PURCHASE RECORD</b> Please record information for future inquiries	
<b>Dealer:</b>	<b>Date in Service:</b>
<b>Serial Number(s):</b>	<b>Number of Units:</b>
	<b>Door # :</b>

The manufacturer offers a full line of dock levelers, dock safety equipment, accessories, ergonomic and scissor lift equipment, and industrial trucks. Concurrent with a continuing product improvement program, specifications are subject to change without notice. Please contact the manufacturer for latest information. Some features illustrated may be optional in certain market areas.

## 2.

## INTRODUCTION

The following is a quick reference to important procedures that must be followed while using the Dock Leveler. It is not intended to cover, or suggest that it does cover, all procedures necessary to ensure safe operation. All operators should be aware of and abide by all workplace safety regulations applicable to the operation of the Dock Leveler system. These laws and regulations include but are not limited to:

- The Occupational Safety and Health Act (USA)
- Occupational Safety and Health Acts for Individual States (USA)
- Canadian Material Handling Regulations

For additional information on these regulations as well as industry standards that may apply to this product, please contact:



American National Standards Institute (ANSI)  
1430 Broadway  
New York, NY 10018  
(212) 642-4900



ALSO MEMBERS OF :  
Loading Dock Equipment Manufacturers  
A Product Section of Material Handling Industry of America,  
A Division of Material Handling Industry  
8720 Red Oak Blvd., Suite 201, Charlotte, NC, 28217-3992  
Telephone: (704) 676-1190 Fax: (704) 676-1199

## 2.1

## WARRANTY INFORMATION

Thank you for purchasing Blue Giant products. We appreciate your business, and are confident that our product will serve you for many years to come. In the event that you experience a problem with our product, our Warranty Center is here to support the Blue Giant Product(s) that you have purchased.

To validate warranty on recently purchased equipment, please complete and submit your information with our on-line Warranty Registration at [www.BlueGiant.com](http://www.BlueGiant.com).

For more information about Blue Giant's Warranty Support, please contact your local Blue Giant Equipment dealer, representative or authorized partner near you. You may also visit [www.BlueGiant.com](http://www.BlueGiant.com) or phone 1-905-457-3900.

\* Note that failure to validate warranty at the time of receipt can seriously affect the outcome of any claim.

## 2.2

## EXCLUSION OF LIABILITY

The manufacturer assumes no liability for damage or injury to persons or property which occur as a result of defects or faults in or incorrect use of the Dock Leveler. The manufacturer also assumes no liability for lost profits, operating downtimes, or similar indirect losses incurred by the purchaser. Injury to third parties, irrespective of its nature, is not subject to compensation.

The manufacturer reserves the right to make changes at any time to the modules, components, and accessories, concurrent with its continuing product development program. Specifications, operating instructions, and illustrations included in this manual are subject to change without notice. Please contact manufacturer for the latest information.




## 2.3

## MANUFACTURER'S NOTE


The Dock Leveler has been carefully inspected and tested at the manufacturer's plant prior to shipment, but should be checked upon receipt for transport damage. Any observed transport damage is to be listed on the signed copy of the freight document. Notify the freight forwarder of any damage WITHIN 48 HOURS.

### 3. OPERATOR'S MANUAL SAFETY MESSAGE COLOR IDENTIFICATION


This manual includes color-coded safety messages that clarify instructions and specify areas where potential hazard exists. To prevent the possibility of equipment damage and serious injury or death, please observe strictly the instructions and warnings contained in the messages. If warning decals become damaged or missing, replace them immediately. Avoid accidents by recognizing dangerous procedures or situations before they occur.


 <b>DANGER</b>	<b>IMPORTANT</b>
Serious injury or death will likely occur if the instructions are not followed.	Procedures marked IMPORTANT must be followed in order to prevent damage to machinery.
 <b>WARNING</b>	 <b>CAUTION</b>
Serious injury or death may occur if the instructions are not followed.	Instructions marked CAUTION concern safe operating procedure. Failure to comply may result in personal injury.

#### 3.1 OPERATIONAL SAFETY WARNINGS

 **DANGER**

- **DO NOT** enter the pit area below the dock leveler.
- **BEFORE BEGINNING ANY SERVICE PROCEDURES:**
  - Disconnect the power and follow all LOCKOUT / TAGOUT procedures
- Never operate a broken or damaged dock leveler. Have repairs done immediately by a qualified service technician.
- Always secure and center loads on the forklifts. Loose or unbalanced loads are dangerous.

 <b>WARNING</b>	<b>IMPORTANT</b>
<ul style="list-style-type: none"> <li>• The upper hinge point is a hazardous pinch point. Do not use fingers or hands to remove foreign materials.</li> <li>• Post safety warnings and barricade working area at dock level and at ground level to prevent unauthorized use of the leveler during maintenance/service.</li> <li>• Never leave the dock leveler unattended in the raised position.</li> <li>• Always make sure that the lip is seated inside the lip keepers after putting the dock in the parked position.</li> <li>• Never leave loads sitting on the dock leveler.</li> <li>• Do not attempt to raise the dock leveler if someone is standing on it.</li> <li>• Do not use the dock leveler if the lip's full width is not fully supported by the vehicle load bed.</li> <li>• Do not operate the dock leveler beyond its rated capacity.</li> <li>• <b>DO NOT</b> drive or walk onto the truck until it is parked against the dock bumpers and the wheels are chocked, or the vehicle restraint has been fully engaged.</li> <li>• <b>NEVER</b> attempt to lift or hold the lip out by hand. Serious personal injury could occur.</li> <li>• <b>ALWAYS</b> check the rigging to make sure that it is secure before proceeding to lift the unit. <b>Never stand under any unit being lifted.</b></li> <li>• <b>NEVER</b> remove the wheel chocks until loading/ unloading is finished and the truck driver has been given permission to depart.</li> </ul>	<ul style="list-style-type: none"> <li>• <b>DO NOT</b> ground welding equipment to any electrical components.</li> <li>• <b>DO NOT</b> attach welder as ground to leveler platform when welding on base frame assembly. Attach welder ground to base frame assembly <b>only</b>.</li> <li>• <b>DO NOT</b> allow the drill to go too deeply when drilling holes in the control box. Damage to the control systems may occur.</li> <li>• <b>NEVER</b> use air to blow debris from control box. Use a vacuum to remove debris from control box.</li> <li>• <b>DO NOT</b> connect green ground lead into control box or junction box until all welding has been completed.</li> <li>• Always keep the work area clean and free of litter.</li> <li>• Always clean all side openings of dirt and debris.</li> <li>• Always clean all dirt and debris from the lip hinge.</li> <li>• Always clean up dry and liquid spills immediately after they occur.</li> <li>• Always maintain proper lighting in the work area.</li> <li>• If a procedure is not clearly defined in this manual, contact your authorized Service Representative.</li> </ul>

 **CAUTION**

- **ONLY TRAINED PERSONNEL** should operate or service this equipment.
- **DO NOT** operate leveler until freight carrier is parked against the dock bumpers and has been secured by a vehicle restraint and/or chocks.
- **ALWAYS** return the leveler platform to the proper stored position.
- **ALWAYS** conduct routine inspections and maintenance. Failure to conduct could cause personal injury or damage to equipment.

## 4. LOCKOUT / TAGOUT PROCEDURE and RULES

### WARNING

Always lockout and tagout any power source before performing any work on any electrical devices or electrical controls according to OSHA regulations and approved local electrical codes.

In accordance with the rules and regulations of the Occupational Safety and Health Administration (OSHA), all affected employees must be notified that the machine or equipment will be shut down and locked out to perform repair or maintenance work. The work area must be checked to ensure that all personnel have been removed or safely repositioned. The machine or equipment power supply shall be locked in the OFF position or disconnected from the energy source. Blue Giant® strongly recommends that only OSHA-approved lockout devices be utilized.



The energy isolating device must bear a prominent warning tag indicating that work is being done on the equipment and the name of the authorized employee responsible for the lockout. It is mandatory that tagout notices not be susceptible to deterioration or illegibility due to weather conditions or exposure to chemicals and moisture.

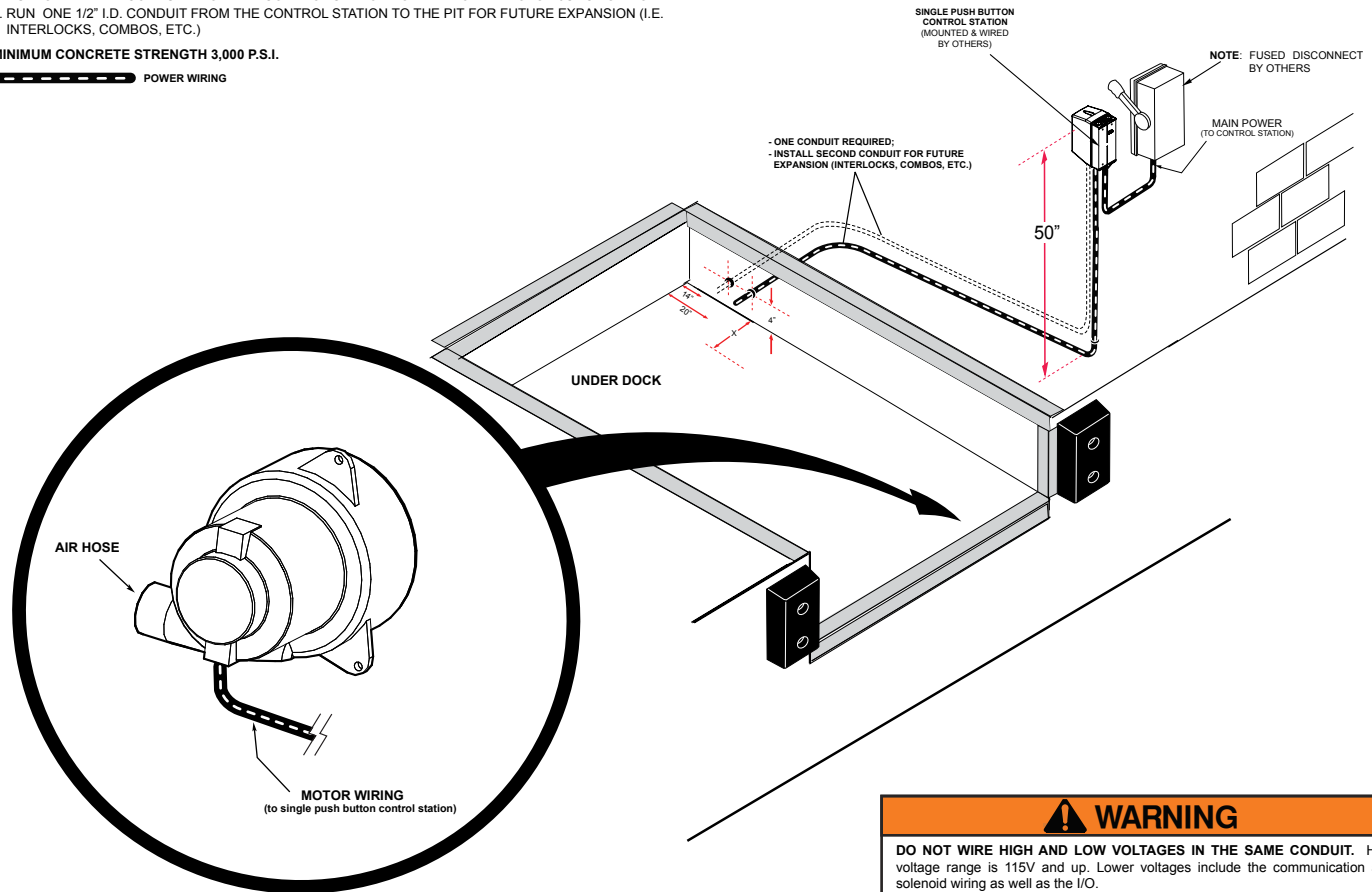
## 5. STANDALONE SINGLE BUTTON DOCK ARRANGEMENT

**NEW CONSTRUCTION (AIR DOCK):**

1. RUN ONE 1/2" I.D. CONDUIT FROM THE CONTROL STATION TO THE BLOWER MOTOR JUNCTION BOX.
2. RUN ONE 1/2" I.D. CONDUIT FROM THE CONTROL STATION TO THE PIT FOR FUTURE EXPANSION (I.E. INTERLOCKS, COMBOS, ETC.)

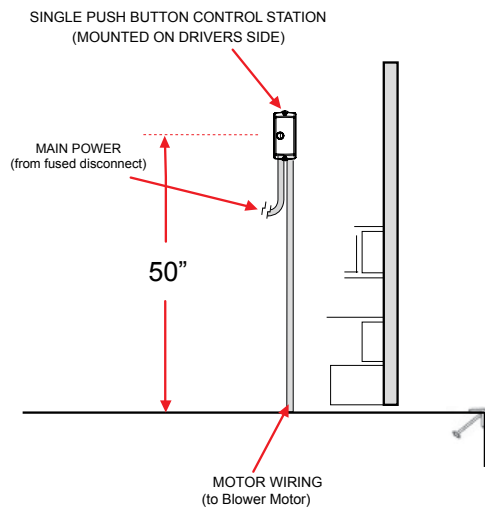
MINIMUM CONCRETE STRENGTH 3,000 P.S.I.

 POWER WIRING

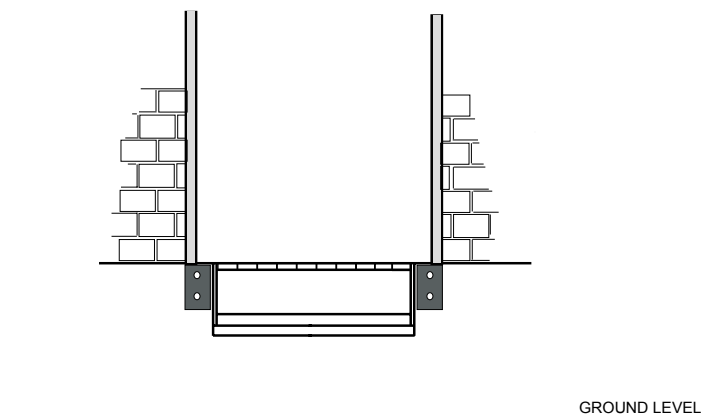


**ELECTRICAL REQUIREMENTS-**

- MOUNT CONTROL BOX STATION TO WALL
- FUSED DISCONNECT PROVIDED BY OTHERS AND WIRING BY OTHERS
- INSTALL WIRING FROM CONTROL BOX STATION TO BLOWER MOTOR
- INSTALL WIRING FROM CONTROL BOX STATION TO POWER SUPPLY



INSIDE BUILDING VIEW\*



FRONT ELEVATION VIEW\*

NOTE: \*DRAWINGS NOT TO SCALE



## 6. DOCK LEVELER INSTALLATION INSTRUCTIONS

**⚠ WARNING**

Do not install, operate and/or service this leveler until you have read and understood all of the safety information and instructions contained herein and on the leveler.

Do not work under or around leveler being installed without first placing adequate barriers to positively prevent vehicle traffic from entering the work area.

Keep hands and feet clear of dock leveler pinch points.

**IMPORTANT**

The information below is crucial to proper installation:

**Pit Curb Angles**

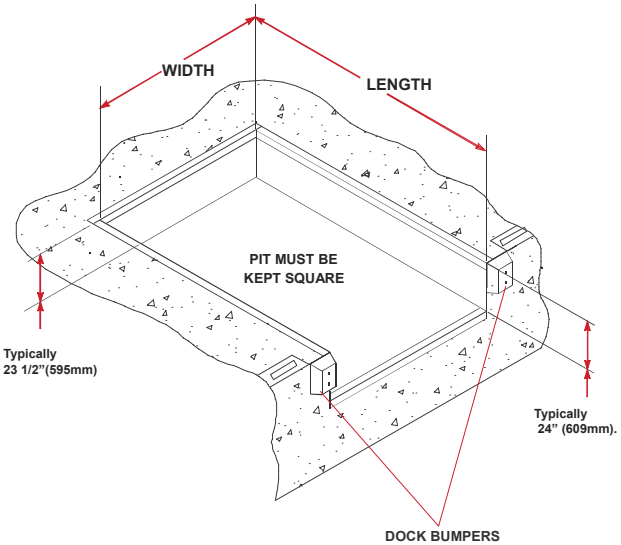
- A. Must be level side-to-side and front-to-back.
- B. Must be square at both rear corners.
- C. Side curb angles must be parallel to each other.
- D. Finished floor to be flush with top surface of curb angle.

The leveler must be welded to a firmly embedded steel or other dock steel as described in the installation instructions. Do not attempt to use only bolts or anchors, to attach the dock leveler to the concrete.

1. Prior to installation, clean pit thoroughly and verify that all dimensions are in accordance with manufacturer specifications.
2. Measure height of rear corners of dock leveler, bottom of frame to top of deck plate, typically 23" (585mm). Measure depth of pit at both rear corners where rear bottom corners of frame will be positioned. Locate and place suitable shims (not supplied) in pit corners to produce a depth to match frame height.
3. Measure height of dock leveler front corners, bottom of frame to top of deck plate, typically 23-1/2" (595mm). Measure depth of pit at both front corners where front bottom corners of frame will be positioned. Locate and place suitable shims (not supplied) at both front corners to produce a depth to match frame height. See Figure 1.
4. Using slings that are rated for a minimum capacity of 2,000 lbs (1,000 kg), carefully sling the dock leveler into place squarely above the pit and lower it gently onto the pre-located shims. Position the leveler to best suit the pit and the dock face. Space between the sides of the deck and sides of the pit should be equal.
5. If the rear beam does not line up squarely with the rear curb angle, use 3" x 6" (75mm x 150mm) shims of suitable thickness to fully support top rear and bottom rear of rear beam at weld areas.

**IMPORTANT**

It is important that the shims fill the space between the bottom edge of the back beam and face of the curb angle, as well as behind each hinge lug on the top edge. Confirm that the top of the back beam is flush with the top surface of the rear curb angle, and then finish weld back beam to curb angle.



**Figure 1 : Pit Layout - Typical (Six piece curb angle shown)**

**⚠ WARNING**

Use caution when lifting or moving the leveler. Do not attempt to lift without suitable hoisting equipment capable of lifting as much as 2,000 lbs (1,000 kg). Follow all hoisting safety requirements.

6. Remove and discard the shipping bolt from the front of the lip plate.
7. There are two options for raising the deck to enable access to the blower motor for electrical hookup.
  - A) Prepare to hook up electrical wires to establish a temporary electrical hookup to enable the deck to be raised.
  - B) Use sling brackets and chains to raise the deck and allow access to the blower motor for electrical hookup.
8. Use the maintenance strut to engage the headboard and lip and hold the deck and lip in the raised, extended position.
9. Complete proper electrical hookup to blower motor.
10. Locate and place adequate and appropriate spacer shims to completely fill the space between the curb angle and frame at the following locations under the front frame:
  - A) Under the maintenance strut base mounting bracket between the curb angle and frame.
  - B) Under the lip keeper brackets (one at each side of frame) between the curb angle and the frame.
  - C) Under the center point of the front frame between the curb angle and the frame.
11. After all electrical connections have been properly completed, press and hold the UP 'I' button until the deck has raised high enough to allow successful disengagement of the maintenance strut. Release the button and allow the deck to lower to the stored position. Ensure that the lip is parked inside the lip keepers.
12. Adjust the height of all front shims as required to level the front sides of the deck with the pit curb angles. Tack-weld the front shims together as well as to the dock leveler frame and the pit curb angle.

## **6. DOCK LEVELER INSTALLATION INSTRUCTIONS**

13. Remove the shipping lock bolt and nut from the front end of the sliding side safety skirts and allow the front ends to swing down to working position.
14. The rear frame on most models has one or more vertical frame members in addition to the rear corner verticals. Place adequate shims directly under each vertical member to fill the space between the bottom frame and the floor of the pit. Finish weld all shims.
15. Finish weld all front frame shims securely to the front curb angle and the front frame.
16. Install specified dock bumpers as required. Do not use the dock leveler without bumpers, as damage to both building and leveler may result.
17. Mount the operations placard, provided with these Instructions to the wall in plain view of dock leveler operations.

### **6.1 Installation Inspection**

1. Clean up the entire work area and apply touch-up paint to all welds, scratches and burns.
2. Test operate the unit through several full cycles of operation. Refer to the Operating Procedures section. If problems are noted, consult the TROUBLESHOOTING section of this manual.
3. Leave these Instructions with the dock leveler for use by owner.

## 7. OPERATING INSTRUCTIONS

### ⚠ WARNING

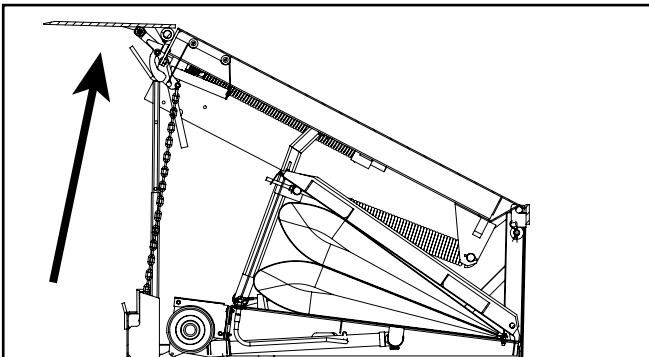
Do not operate this leveler unless you have been trained and authorized to do so, and have read and understood all of the safety information and instructions contained herein. Do not operate the dock leveler beyond its rated capacity. Do not operate this leveler until you have checked its condition. Report the need for repairs to your supervisor immediately and do not operate the unit until repairs are made. Neglect may cause a minor repair to become a major service problem and cause the leveler to become unsafe. Never try to lift or move any part of the dock leveler manually. Do not drive on the leveler unless the lip is securely on the truck bed and has a minimum of 4" (100mm) overlap on its surface. Do not exceed 4 mph when driving over the dock leveler. Do not drive over edges of the leveler and / or dock bumper blocks (bumpers blocks are not structural).

### 7.1 Functional Description

The **U-Series Airbag Dock Leveler** serves as a bridge between a loading dock floor and the load bed of a transport vehicle. The leveler's upper deck plate, complete with a hinged, vertically hanging lip, is in a shallow pit at the edge of the dock, flush with the dock's edge and the floor surface. After the door has been opened, the rear of a transport vehicle is parked and restrained in place against the outer wall of the loading dock, in working alignment with the dock leveler. To activate the dock leveler, press the 'UP' button on the control station. The air bag will inflate, raising the deck. Once the lip extends, release the button. The bag will deflate, allowing the deck to lower onto the truck bed.

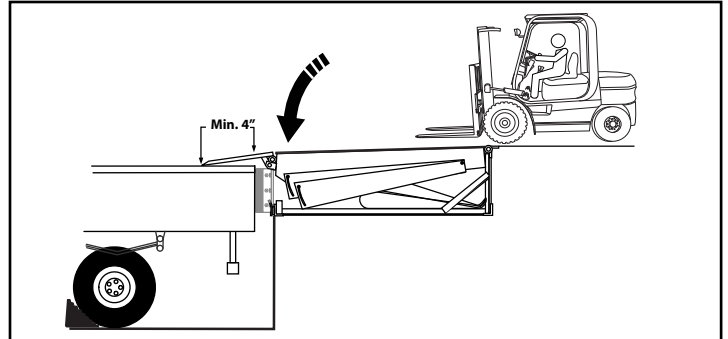
### 7.2 Deploying the Dock Leveler

1. After the truck has been chocked and / or restrained in place, activate the dock leveler's air bag by pressing and holding the control station's 'UP' (I) button until the deck is fully raised and the lip has reached its fullest extension.
2. When the lip is fully extended, release the 'UP' button. The air bag will deflate and allow the deck to lower onto the truck bed.
3. After ensuring that there is a minimum overlap of 4" (101mm) between the dock leveler lip and the truck bed, begin loading or unloading.



### ⚠ WARNING

Secure the transport vehicle with a vehicle restraint, wheel chocks or other method before commencing traffic across the dock leveler.

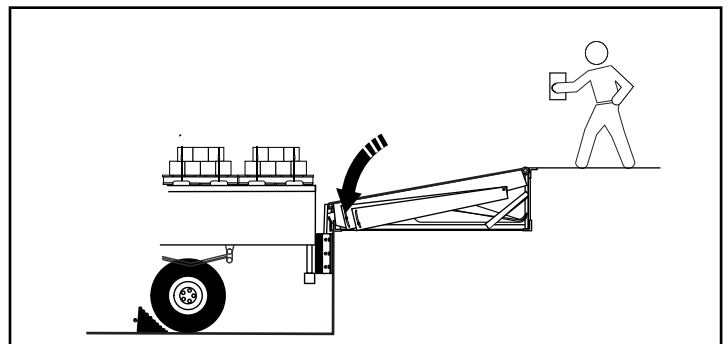


### 7.3 Storing the Dock Leveler

1. Once loading or unloading has been completed, press and hold the 'UP' button again, inflating the air bag until the deck is raised and the lip is fully pendant.
2. Release the 'UP' button. The bag will deflate and resume the parked position, with the lip resting in the lip keepers.
3. Disengage the vehicle restraint (if applicable) and / or remove the wheel chocks, allowing the truck to depart.

### 7.4 Below Level / End Loading

1. After the truck has been chocked and / or restrained in place, activate the dock leveler's air bag by pressing and holding the control station's 'UP' button until the lip clears the lip keepers and is partially extended.
2. Release the 'UP' button. The deck will lower to the below level position, with the lip hanging between the dock face and the truck bed.



## 8. MAINTENANCE

**⚠ WARNING**

Do not operate and/or service this dock leveler until you have read and understood all of the safety information and instructions contained herein and on the dock leveler.

Do not work under or around dock leveler without first placing adequate barriers to positively prevent vehicle traffic from entering the work area.

Follow proper lock-out/tag-out procedures.

Keep hands and feet clear of dock leveler pinch points and wear appropriate safety attire - glasses, gloves and work boots.

**⚠ WARNING**

*The Maintenance strut must be in place before commencing maintenance procedures.*

### 8.1 Planned Maintenance

In addition to the daily operator inspection, the manufacturer recommends (and local government regulations may require) that a planned maintenance (PM) and safety inspection program be performed by a trained and authorized service technician on a regular basis to maintain the equipment in safe operating condition. The PM will provide an opportunity to make a thorough inspection of the safety and operating condition of the dock leveler. Necessary adjustments and repairs can be done during the PM, which will increase the life of components and reduce unscheduled downtime.

Recommended procedures for a periodic planned maintenance program that covers inspections, operational checks, cleaning, lubrication, and minor adjustments are outlined in this manual. An authorized dealer or distributor is prepared to assist with a planned maintenance program by offering trained service personnel with expertise in dock leveler maintenance requirements.

### 8.2 Operator Daily Inspection

The dock leveler should always be examined by the operator PRIOR TO ANY USE to verify that it is safe to operate.

The manufacturer recommends making multiple photocopies of the Operator's Daily Checklist. The operator should fill out this form to keep a daily record of operation and maintenance issues.

### 8.3 Routine Servicing and Maintenance

Regular maintenance and care of the dock leveler is very important for cost and operation efficiency and more importantly; operator safety. A faulty dock leveler is a potential source of danger to the operator, and to other personnel working near it. As with all quality equipment, keep the dock leveler in good operating condition by following the recommended schedule of maintenance.

Failure to properly maintain or operate the dock leveler within its rated capacity can void the manufacturer warranty.

### 8.4 Planned Maintenance Intervals

Arrange for a qualified dock leveler repair technician to perform regularly scheduled planned maintenance on your dock leveler every 3 months for single shift operations or monthly for multi-shift operations.

Call your authorized manufacturer/ dealer for further details.

### 8.5 Maintenance Sequence

1. Cleaning, including pit area.
2. Visual inspection of all components.
3. Lubrication, as required. (by a trained service technician only)
4. Test operate all functions.
5. Adjustments, if required. (by a trained service technician only)
6. Check for missing or damaged dock bumpers.
7. Record inspection details and findings for owners' files.

### MAINTENANCE & SERVICE TIME INTERVALS FOR SPECIFIC DOCK COMPONENTS CHART

	EXTENSION SPRINGS	DECK ASSEMBLY	SAFETY LEGS	LIP HINGE ASSEMBLY	LIP EXTENSION SYSTEM	AIR BAG
<b>INSPECT</b>	<b>ALL THE ABOVE EVERY 90 DAYS</b> (for multi-shift operations every 30 days is required)					
<b>CLEAN</b>	<b>ALL THE ABOVE EVERY 90 DAYS</b> Clean Lip As Required (for multi-shift operations every 30 days is required)					
<b>LUBRICATE</b>	As Needed	Every 90 Days Pivot Points (Light Oil)	Every 90 Days (Light Oil)	Every 90 Days (Grease)	Every 90 Days (Light Oil)	Not Required
<b>ADJUST</b>	As Needed	Not Required	Not Required	Not Required	As Needed	As Needed

**Note :** In many localities, all lifting devices must be inspected a minimum once per year.

**8.6 PM CHECK LIST - DOCK EQUIPMENT**


<b>Customer</b>		<b>Tel</b>		<b>SWO#</b>	
<b>Location</b>		<b>Cust. Contact</b>			
<b>Date</b>		<b>Inspected By</b>			

**Barricade Work Area**

<b>CLEAN</b>	<b>Repairs?</b>	<b>OK</b>	<b>CHECK / ADJUST / LUBE</b>	<b>Repairs?</b>	<b>OK</b>
Pit Area			Check Clevis Pins & Lubricate		
Deck Hinge			Check Dock Bumpers		
Lip Hinge			Check Weather Seals		
			Check Dock Seal/Dock Shelter		
<b>CHECK</b>	<b>Repairs?</b>	<b>OK</b>	Check For Proper Operation		
Check Full Operating Cycle			Clean Up Of Dock Leveler Area		
Check Instruction, Caution, Danger Labels			Place Updated Service Sticker On Equipmen		
Check Welds On Dock Leveler					
Check Maintenance Strut / Lip Latch					
Check Ramp Rear Hinges					
Check Dock Leveler Structure, Sub Frame, Shim					
Lubricate Rear Hinges & Pins					
Lubricate Dock Leveler Lip Hinge					
Structural Damage					
Check Lip Crown					
Dock Bumpers / Extensions					
Overhead Door					
Curb Angle					
Safety Skirts					

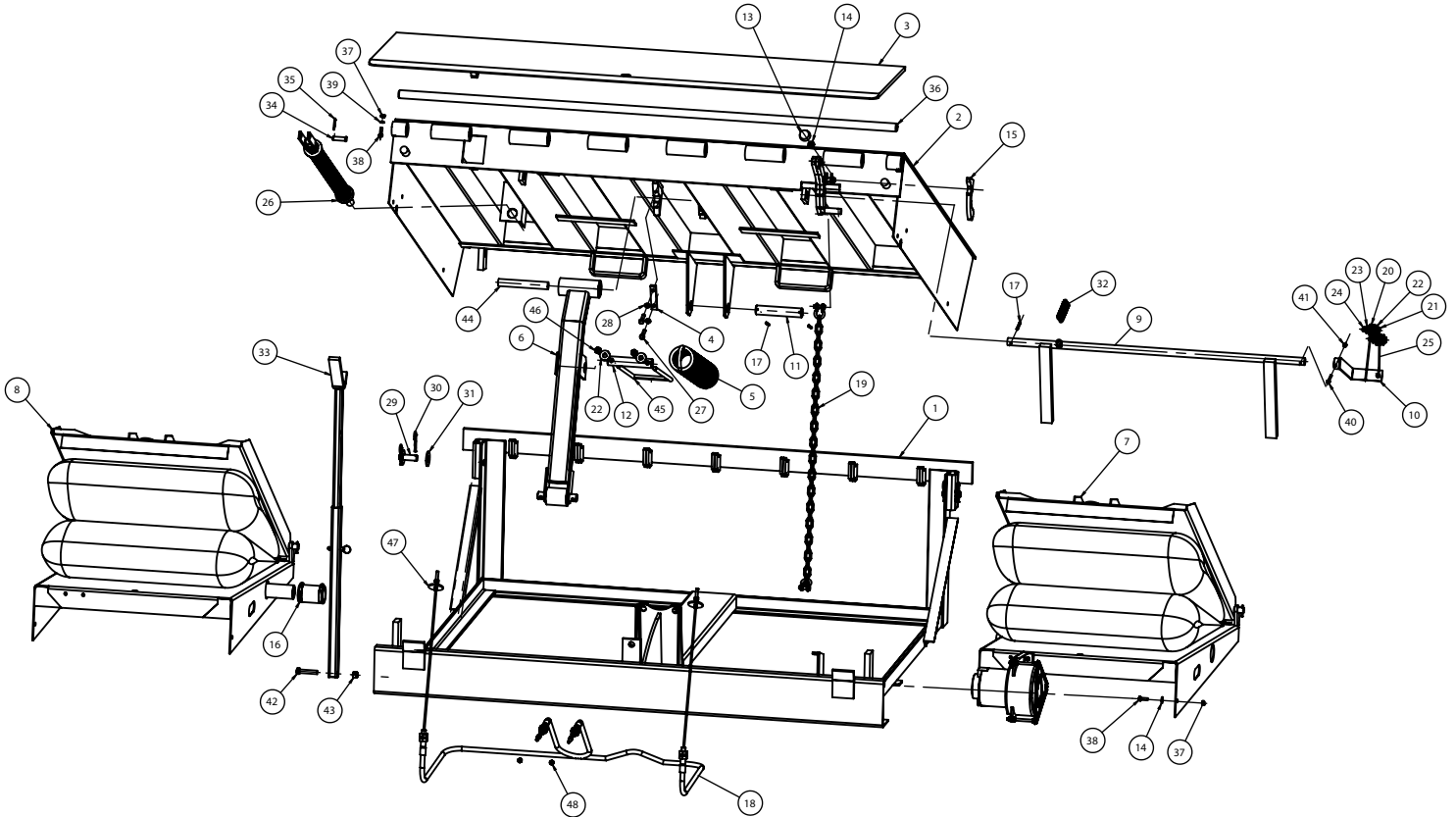
**COMMENTS**


**REPAIRS RECOMMENDED**


 <b>WARNING</b>
<p><i>Do not install this leveler, operate and/or service unless you have been trained and authorized to do so.</i></p>

**9. DOCK GENERAL ASSEMBLY COMPONENTS- 6' DOCK**

**6' WIDE X 6' LONG, 6' 6" WIDE X 6' LONG, 7' WIDE X 6' LONG**

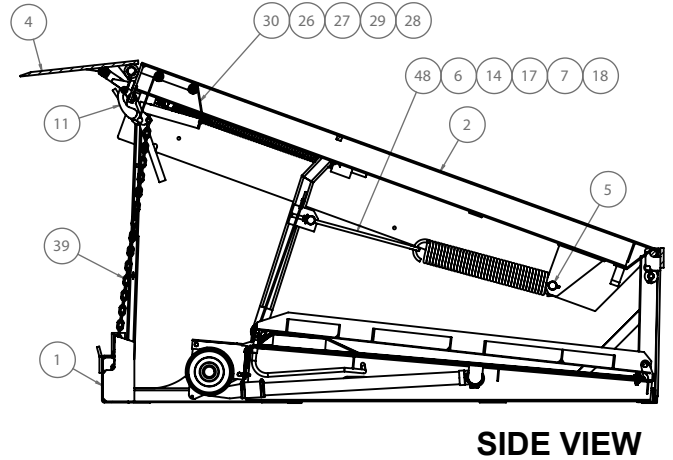
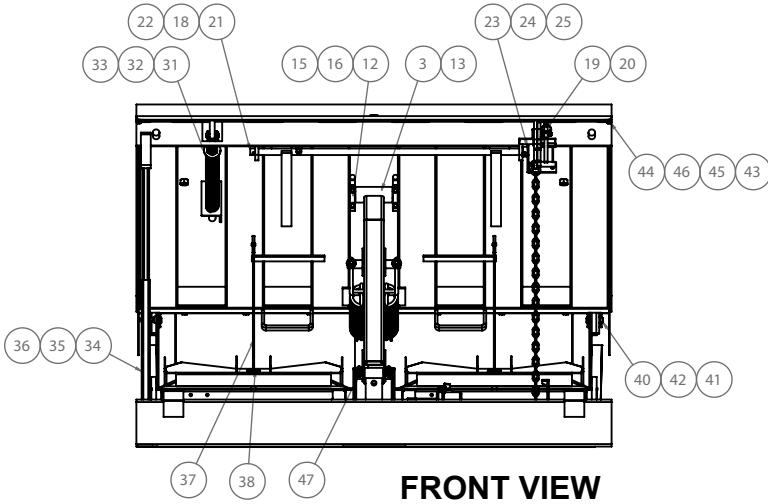


Item No.	Qty	Part No.	Description	Item No.	Qty	Part No.	Description
1	1	26-004177	Frame Weld 72" W	25	1	26-004338	Cable, Ball End
2	1	26-004691	Deck Weld Assembly	26	1	200-0346-1	Lip Assist Spring Assembly
3	1	26-004179-2	Lip Weld 72" W	27	4	010-040	Cap Screw 3/8-16 x 1 1/2 HH GR.5
4	2	113-096	Pivot Block Top Plate	28	4	012-201	Lock Washers 3/8" HELICAL
5	1	22-000998	Main Spring	29	2	26-005610	Pin (Fixed Rear Hinge)
6	1	26-04347	Arm Assembly	30	4	013-029	Lock Pin
7	1		Platform Assembly RH	31	4	012-214	Flat Washers (U.S.)
8	1	26-004602	Platform Assembly LH	32	1	017-012	Tension Spring
9	1	26-004687	Fall Safe Weldment	33	1	26-004830	Safety Strut Assembly
10	1	26-004689	Fall Safe Tilt Handle	34	1	013-621	Clevis Pin
11	1	26-005447-2	Pin	35	1	013-024	Cotter Pin 5/32
12	1	26-005447-3	Pin	36	1	109-699	Shaft
13	1	165-9197	Rubber Bumper	37	2	011-502	Hex Nuts (U.S.)
14	1	012-211	Flat Washers (U.S.)	38	2	010-006	Cap Screw 5/16-18 x 1 HH GR. 5 ZC
15	1	26-004979	Stopper (Below Level)	39	2	012-200	Regular Spring Lock Washers 5/16" (U.S.)
16	1	26-004820	Flex Pipe Coupling	40	1	010-003	Cap Screw 1/4-20 x 2 HH
17	3	013-012	Spring Pin	41	1	011-545	Nylon Insert Locknuts 3/4" -20 (U.S.)
18	1	26-004828	Cable Assembly	42	1	010-027	HHCS
19	1	26-004829	Chain Assembly	43	1	011-554	Nylon Insert Locknuts 1/2" -13 (U.S.)
20	2	26-004824	Cable Roller Assembly	44	1	26-004530-3	Pivot Pin
21	2	011-080	Socket Head Shoulder Screws (UNRC)	45	1	26-05535	Adjustable Spring Clevis
22	4	012-212	Flat Washers (U.S.)	46	2	011-508	Hex Nuts (U.S.)
23	2	012-252	3/8" Flat Washer	47	2	26-005444	Washer
24	2	011-552	Nylon Insert Locknuts 3/8"-16 (U.S.)	48	2	011-518	Nuts HEX 5/16 - 24 PLTD

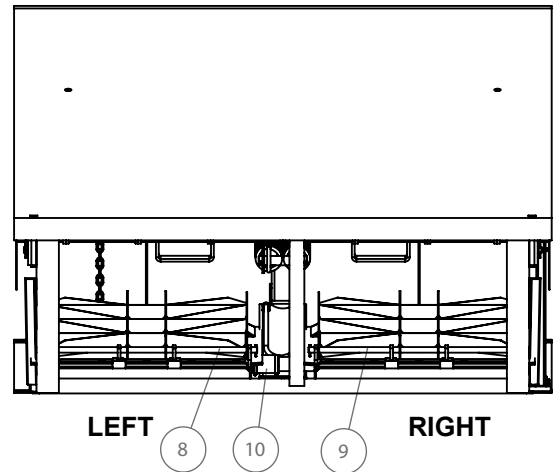
MODEL	LIP	LIP WELD	B-FRAME	DECK	SHAFT	LIP ASS.	RH BAG	MODEL	LIP	LIP WELD	B-FRAME	DECK	SHAFT	LIP ASS.	RH BAG
ABU6-6-30	16"	26-004179	26-004177	26-004691	109-699	N/A	26-004692	ABU66-6-35	18"	26-005478-1	26-005538-1	26-004691-4	111-595-1	200-03461-1	26-004692-3
ABU6-6-30	18"	26-004179-1	26-004177-1	26-004691	109-699	200-03461-1	26-004692	ABU66-6-35	20"	26-005478-2	26-005538-2	26-004691-4	111-595-1	26-005615	26-004692-3
ABU6-6-30	20"	26-004179-2	26-004177-2	26-004691	109-699	200-03461-1	26-004692	ABU66-6-40	16"	26-005479	26-005538	26-004691-5	111-595-1	200-03461-1	26-004692-3
ABU6-6-35	16"	26-004179	26-004177	26-004691-1	110-763	200-03461-1	26-004692	ABU66-6-40	18"	26-005479-1	26-005538-1	26-004691-5	111-595-1	200-03461-1	26-004692-3
ABU6-6-35	18"	26-004179-1	26-004177-1	26-004691-1	110-763	200-03461-1	26-004692	ABU66-6-40	20"	26-005479-2	26-005538-2	26-004691-5	111-595-1	26-005615	26-004692-3
ABU6-6-35	20"	26-004179-2	26-004177-2	26-004691-1	110-763	26-05615	26-004692	ABU7-6-30	16"	26-005383	26-005385	26-004691-6	109-690	N/A	26-004692-2
ABU6-6-40	16"	26-005384	26-004177	26-004691-2	110-763	200-03461-1	26-004692	ABU7-6-30	18"	26-005383-1	26-005385-1	26-004691-6	109-690	200-03461-1	26-004692-2
ABU6-6-40	18"	26-005384	26-004177-1	26-004691-2	110-763	200-03461-1	26-004692	ABU7-6-30	20"	26-005383-2	26-005385-2	26-004691-6	109-690	200-03461-1	26-004692-2
ABU6-6-40	20"	26-005384	26-004177-2	26-004691-2	110-763	26-005615	26-004692	ABU7-6-35	16"	26-005388	26-005385	26-004691-7	111-594	200-03461-1	26-004692-2
ABU66-6-30	16"	26-005477	26-005538	26-004691-3	109-687-1	N/A	26-004692-3	ABU7-6-35	18"	26-005388-1	26-005385-1	26-004691-7	111-594	200-03461-1	26-004692-2
ABU66-6-30	18"	26-005477-1	26-005538-1	26-004691-3	109-687-1	200-03461-1	26-004692-3	ABU7-6-35	20"	26-005388-2	26-005385-2	26-004691-7	111-594	26-005615	26-004692-2
ABU66-6-30	20"	26-005477-2	26-005538-2	26-004691-3	109-687-1	200-03461-1	26-004692-3	ABU7-6-40	16"	26-005387	26-005385	26-004691-8	111-594	200-03461-1	26-004692-2
ABU66-6-35	16"	26-005478	26-005538	26-004691-4	111-595-1	200-03461-1	26-004692-3	ABU7-6-40	18"	26-005387-1	26-005385-1	26-004691-8	111-594	200-03461-1	26-004692-2

**10. DOCK GENERAL ASSEMBLY COMPONENTS- 8' DOCK**

**6' WIDE X 8' LONG**



**REAR VIEW**

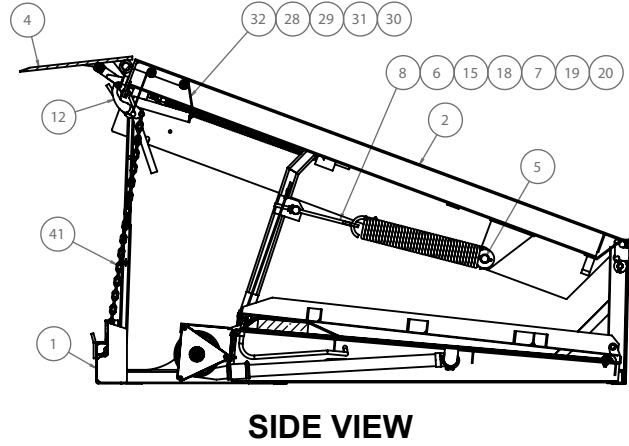
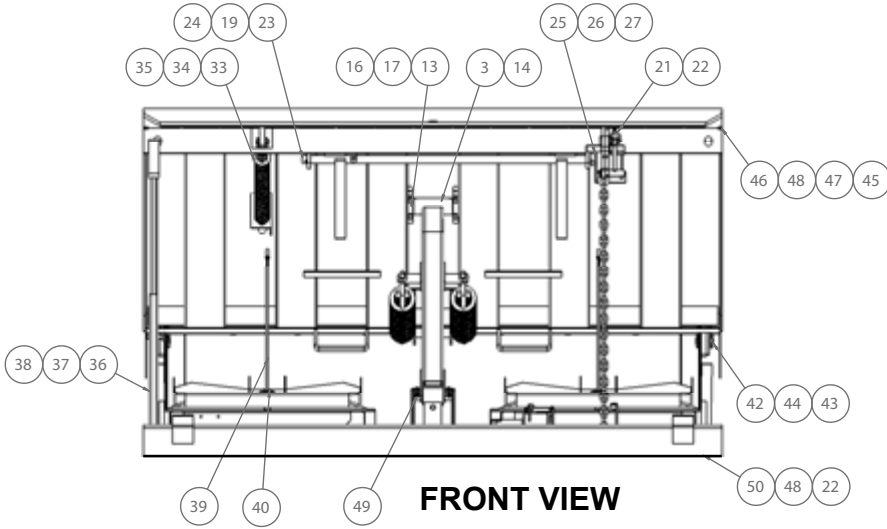


ITEM NO.	QTY.	PART NO.	DESCRIPTION
48	1	26-005623	ADJUSTABLE SPR CLEVIS
47	2	011-519	Hex Nuts (U.S.)
46	2	011-502	Hex Nuts (U.S.)
45	2	012-200	Regular Spring Lock Washers 5/16" (U.S.)
44	2	010-006	CAP SCREW 5/16-18 X 1 HH GR. 5 ZC
43	1	109-699	SHAFT
42	4	013-029	LOCK PIN
41	4	012-214	Flat Washers (U.S.)
40	2	26-005610	PIN (REAR FIXED HINGE)
39	1	26-004829	CHAIN ASSY.
38	2	26-005444	WASHER
37	1	26-005616	CABLE ASSY
36	1	011-554	Nylon Insert Locknuts 1/2"-13(U.S.)
35	1	010-027	HHCS
34	1	26-004830	SAFETY STRUT ASSY.
33	1	013-020	COTTER PIN 1/8 X 1"
32	1	013-621	CLEVIS PIN
31	1	200-03461-1	LIP ASSIST SPR ASSY
30	1	26-004338	CABLE, BALL END
29	2	011-552	Nylon Insert Locknuts 3/8"-16(U.S.)
28	2	012-252	3/8" Flat Washer
27	2	011-080	Socket Head Shoulder Screws (UNRC)
26	2	26-004824	CABLE ROLLER ASSY
25	1	011-545	Nylon Insert Locknuts 1/4"-20(U.S.)
24	1	010-003	CAP SCREW 1/4-20 X 2 HH
23	1	26-004689	F-SAFE TILT HANDLE
22	1	017-012	TENSION SPRING
21	1	26-004687	FALL SAFE WLDMT
20	1	012-211	Flat Washers (U.S.)
19	1	165-9197	RUBBER BUMPER
18	3	013-012	Spring pin
17	2	011-508	Hex Nuts (U.S.)
16	4	010-040	CAP SCREW 3/8-16 X 1-1/2 HH GR.5
15	4	012-201	Lock Washers 3/8" HELICAL
14	4	012-212	Flat Washers (U.S.)
13	1	26-004530-3	PIVOT PIN
12	2	113-096	PIVOT BLOCK TOP PLATE
11	1	26-004979	STOPPER (BELOW LEVEL)
10	1	26-004820	FLEX PIPE COUPLING
9	1	26-005482	PLATFORM ASSY LH
8	1	26-005481	PLATFORM ASSY RH
7	2	22-000998	MAIN SPRING
6	1	26-005447-4	PIN
5	1	26-005447-2	PIN
4	1	26-004179-1	LIP WELD 72" WIDE
3	1	26-004347	ARM ASSY
2	1	26-004691-9	DECK WELD ASSY
1	1	26-005386	FRAME WELD 72" W

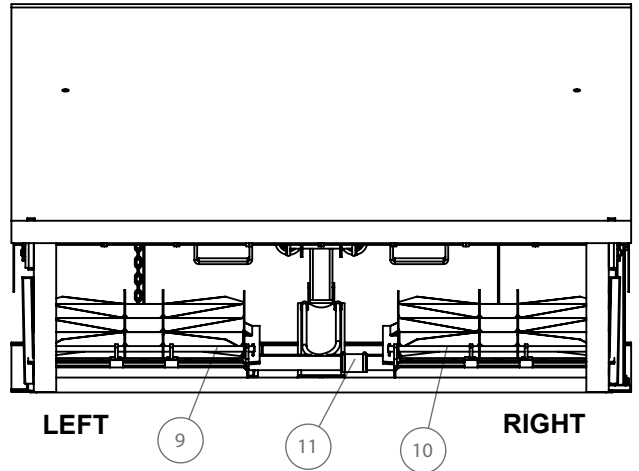
MODEL	LIP	LIP WELD	B-FRAME	DECK	SHAFT	LIP ASS	LH BAG	RH BAG	CABLE
ABU6-8-30	16"	26-004179	26-005386	26-004691-9	109-699	N/A	26-004602	26-004692	3/16"
ABU6-8-30	18"	26-004179-1	26-005386-1	26-004691-9	109-699	200-03460	26-004602	26-004692	3/16"
ABU6-8-30	20"	26-004179-2	26-005386-2	26-004691-9	109-699	200-03460	26-004602	26-004692	3/16"
ABU6-8-35	16"	26-005476	26-005386	26-004691-10	110-763	200-03460	26-005482	26-005481	1/4"
ABU6-8-35	18"	26-005476-1	26-005386-1	26-004691-10	110-763	200-03460	26-005482	26-005481	1/4"
ABU6-8-35	20"	26-005476-2	26-005386-2	26-004691-10	110-763	26-004983	26-005482	26-005481	1/4"
ABU6-8-40	16"	26-005384	26-005386	26-004691-11	110-763	200-03460	26-005482	26-005481	1/4"
ABU6-8-40	18"	26-005384-1	26-005386-1	26-004691-11	110-763	200-03460	26-005482	26-005481	1/4"
ABU6-8-40	20"	26-005384-2	26-005386-2	26-004691-11	110-763	26-004983	26-005482	26-005481	1/4"

# 11. DOCK GENERAL ASSEMBLY COMPONENTS- 8' DOCK

6' 6" WIDE X 8' LONG, 7' WIDE X 8' LONG



## REAR VIEW

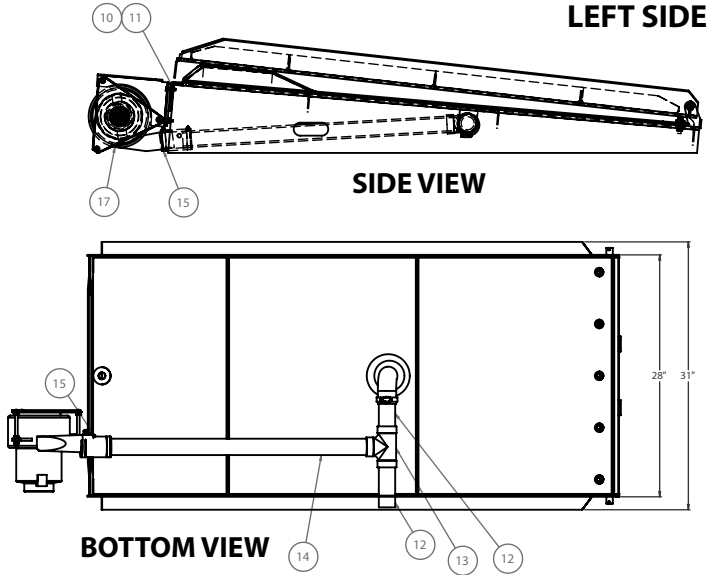


ITEM NO.	QTY.	PART NO.	DESCRIPTION
50	2	010-151	CAP SCREW 5/16-18 X 1-1/4 HH GR. 5 ZC
49	2	011-519	Hex Nuts (U.S.)
48	4	011-502	Hex Nuts (U.S.)
47	2	012-200	Regular Spring Lock Washers 5/16" (U.S.)
46	2	010-006	CAP SCREW 5/16-18 X 1 HH GR. 5 ZC
45	1	109-690	SHAFT
44	4	013-029	LOCK PIN
43	4	012-214	Flat Washers (U.S.)
42	2	26-005610	PIN (REAR FIXED HINGE)
41	1	26-004829	CHAIN ASSY.
40	2	26-005444	WASHER
39	1	26-005616	CABLE ASSY
38	1	011-554	Nylon Insert Locknuts 1/2"-13(U.S.)
37	1	010-027	HHCS
36	1	26-004830	SAFETY STRUT ASSY.
35	1	013-020	COTTER PIN 1/8 X 1"
34	1	013-621	CLEVIS PIN
33	1	200-03461-1	LIP ASSIST SPR ASSY
32	1	26-004338	CABLE, BALL END
31	2	011-552	Nylon Insert Locknuts 3/8"-16(U.S.)
30	2	012-252	3/8" Flat Washer
29	2	011-080	Socket Head Shoulder Screws (UNRC)
28	2	26-004824	CABLE ROLLER ASSY
27	1	011-545	Nylon Insert Locknuts 1/4"-20(U.S.)
26	1	010-003	CAP SCREW 1/4-20 X 2 HH
25	1	26-004689	F-SAFE TILT HANDLE
24	1	017-012	TENSION SPRING
23	1	26-004687	FALL SAFE WLDMT
22	3	012-211	Flat Washers (U.S.)
21	1	165-9197	RUBBER BUMPER
20	2	105-882	Flat Washers (U.S.)
19	3	013-012	Spring pin
18	2	011-508	Hex Nuts (U.S.)
17	4	010-040	CAP SCREW 3/8-16 X 1-1/2 HH GR.5
16	4	012-201	Lock Washers 3/8" HELICAL
15	4	012-212	Flat Washers (U.S.)
14	1	26-004530-3	PIVOT PIN
13	2	113-096	PIVOT BLOCK TOP PLATE
12	1	26-004979	STOPPER (BELOW LEVEL)
11	1	26-004820	FLEX PIPE COUPLING
10	1	26-005482	PLATFORM ASSY LH
9	1	26-005481-1	PLATFORM ASSY RH
8	2	26-005480	SPR TENSION ROD
7	2	22-000998	MAIN SPRING
6	1	26-005447-1	PIN
5	1	26-005447	PIN
4	1	26-005383-1	LIP WELD 83" WIDE
3	1	26-004347	ARM ASSY
2	1	26-004691-15	DECK WELD ASSY
1	1	26-004833	FRAME WELD 83" W

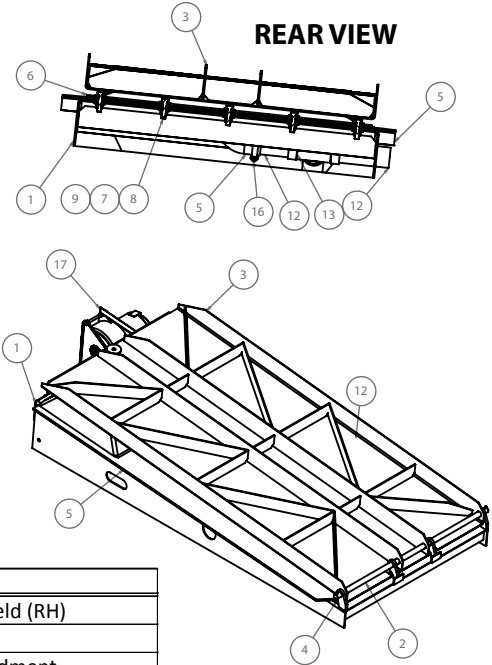
MODEL	LIP	LIP WELD	B-FRAME	DECK	SHAFT	LIP ASS	RH BAG
ABU66-8-30	16"	26-005477	26-005539	26-004691-12	109-687-1	N/A	26-005481-2
ABU66-8-30	18"	26-005477-1	26-005539-1	26-004691-12	109-687-1	200-03460	26-005481-2
ABU66-8-30	20"	26-005477-2	26-005539-2	26-004691-12	109-687-1	200-03460	26-005481-2
ABU66-8-35	16"	26-005478	26-005539	26-004691-13	111-595-1	200-03460	26-005481-2
ABU66-8-35	18"	26-005478-1	26-005539-1	26-004691-13	111-595-1	200-03460	26-005481-2
ABU66-8-35	20"	26-005478-2	26-005539-2	26-004691-13	111-595-1	26-004983	26-005481-2
ABU66-8-40	16"	26-005479	26-005539	26-004691-14	111-595-1	200-03460	26-005481-2
ABU66-8-40	18"	26-005479-1	26-005539-1	26-004691-14	111-595-1	200-03460	26-005481-2
ABU66-8-40	20"	26-005479-2	26-005539-2	26-004691-14	111-595-1	26-004983	26-005481-2
ABU7-8-30	16"	26-005383	26-004833	26-004691-15	109-690	N/A	26-005481-1
ABU7-8-30	18"	26-005383-1	26-004833-1	26-004691-15	109-690	200-03460	26-005481-1
ABU7-8-30	20"	26-005383-2	26-004833-2	26-004691-15	109-690	200-03460	26-005481-1
ABU7-8-35	16"	26-005388	26-004833	26-004691-16	111-594	200-03460	26-005481-1
ABU7-8-35	18"	26-005388-1	26-004833-1	26-004691-16	111-594	200-03460	26-005481-1
ABU7-8-35	20"	26-005388-2	26-004833-2	26-004691-16	111-594	26-004983	26-005481-1
ABU7-8-40	16"	26-005387	26-004833	26-004691-17	111-594	200-03460	26-005481-1
ABU7-8-40	18"	26-005387-1	26-004833-1	26-004691-17	111-594	200-03460	26-005481-1
ABU7-8-40	20"	26-005387-2	26-004833-2	26-004691-17	111-594	26-004983	26-005481-1



**12. DOCK GENERAL ASSEMBLY- PLATFORM**



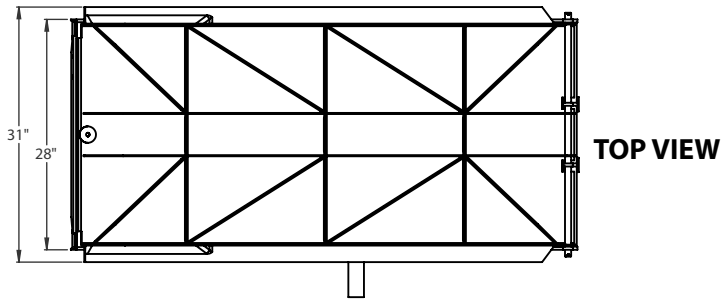
**LEFT SIDE**



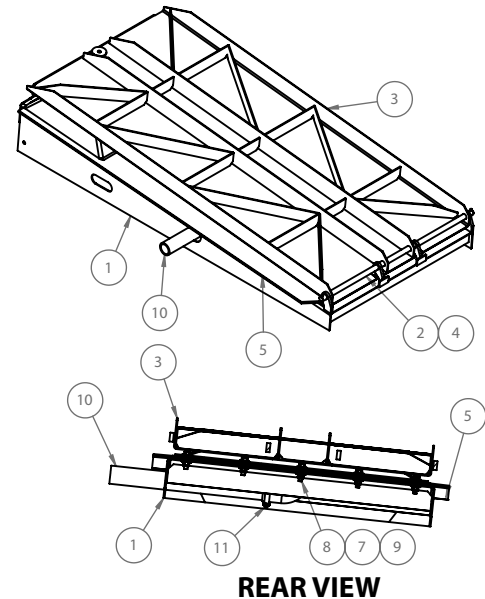
**REAR VIEW**

Item No.	Qty.	Part No.	Description
1	1	26-005483	Lower Platform Weld (RH)
2	1	26-004593-2	Pivot Pin
3	1	26-005390	Top Platform Weldment
4	2	013-127	3/16 dia. spring pin x 1.50
5	1	26-005475	LH air bag (8'L Dock)
6	1	26-004816	Keeper Bar
7	5	011-552	Nylon Insert Locknuts 3/18" – 16 (U.S.)
8	5	010-014	Cap Screw 3/18 x 1-1/2 HH ZC
9	10	012-252	3/8" Flat Washer
10	2	012-210	Flat Washers (US)
11	2	011-545	Nylon Insert Locknuts 1/4" – 20 (U.S.)
12	2	26-004981-1	Pipe
13	1	26-004821	Tee Coupling
14	1	26-004981-4	Pipe
15	1	26-004820	Flex pipe coupling
16	1	035-743	Hose clamp 2 1/2"
17	1	26-005620	Blower motor assembly

**RIGHT SIDE**



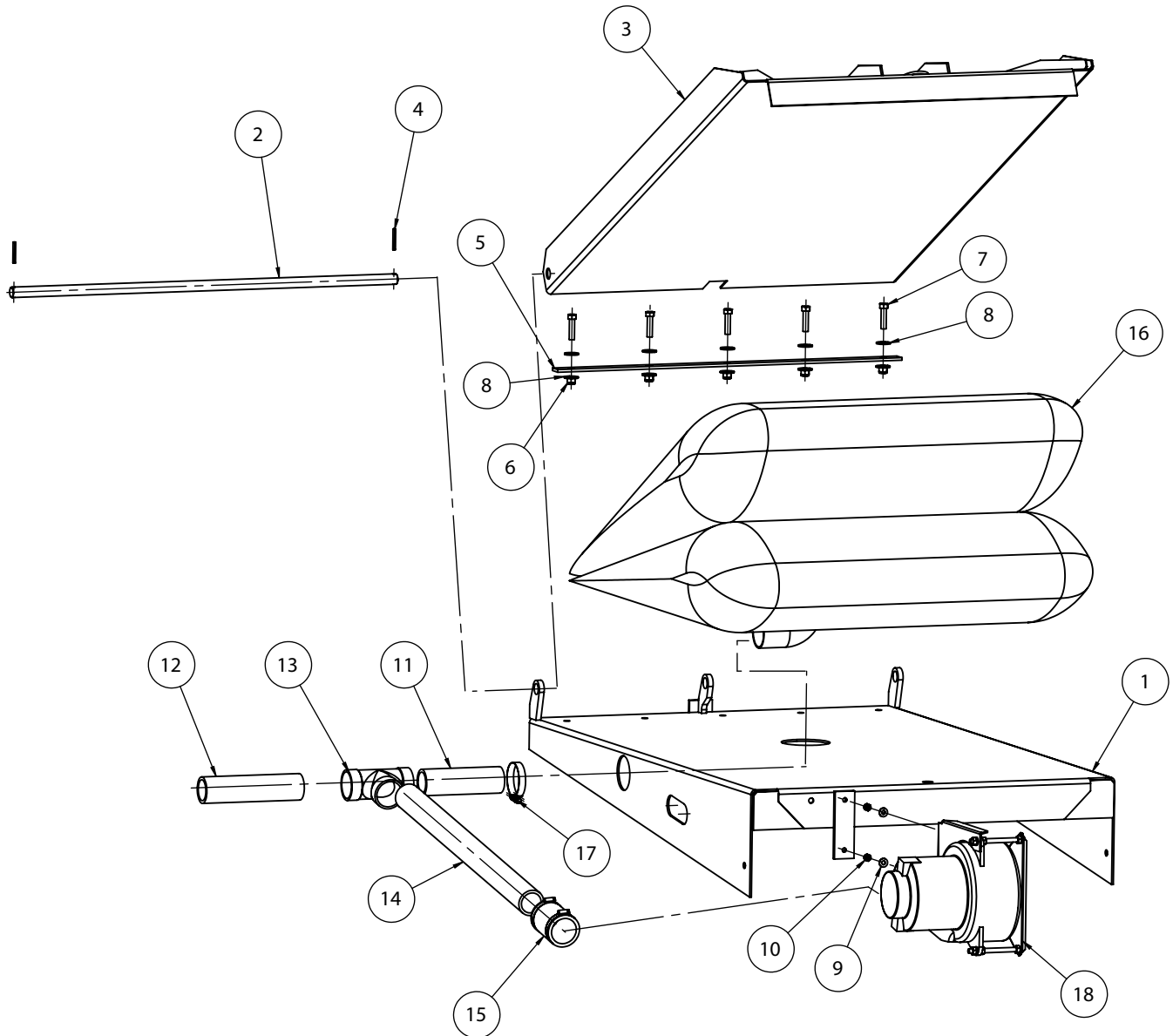
**TOP VIEW**



**REAR VIEW**

Item No.	Qty.	Part No.	Description
1	1	26-005391	Lower Platform Weld (LH)
2	1	26-004593-2	Pivot Pin
3	1	26-005390	Top Platform Weldment
4	2	013-127	3/16 dia. spring pin x 1.50
5	1	26-005474	RH air bag
6	1	26-004816	Keeper Bar
7	5	011-552	Nylon Insert Locknuts 3/18" – 16 (U.S.)
8	5	010-014	Cap Screw 3/18 x 1-1/2 HH ZC
9	10	012-252	3/8" Flat Washer
10	1	26-004981-5	Pipe
11	1	035-743	Hose Clamp 2 1/2"

**12. DOCK GENERAL ASSEMBLY- PLATFORM**



Item No.	Qty.	Part No.	Description
1	1	26-004693	Lower Platform Weld RH
2	1	26-004593-2	Pivot Pin
3	1	26-004601	Top Platform Weldment
4	2	013-127	3/16 dia. Spring Pin x 1.50
5	1	26-004816	Keeper Bar
6	5	011-552	Nylon Insert Locknuts 3/8" – 16 (U.S.)
7	5	010-014	Cap Screw 3/8- 16 x 1 1/2 HH ZC
8	10	012-252	3/8" Flat Washer
9	2	012-210	Flat Washers (U.S.)
10	2	011-545	Nylon Insert Locknuts 1/4" – 20 (U.S.)
11	1	26-004981-1	Pipe
12	1	26-004981	Pipe
13	1	26-004821	Tee Coupling
14	1	26-004981-3	Pipe
15	1	26-004820	Flex Pipe Coupling
16	1	26-004827	Air Bags
17	1	035-743	Hose Clamp 2 1/2"
18	1	26-005620	Blower Motor Assembly

**13.**

**RECOMMENDED SPARE PARTS LIST**

\* Complements for the Platform Assembly (LH & RH) \*

Part #	Description	Qty Req'd
035-743	HOSE CLAMP (2-1/2")	1
26-004820	FLEX PIPE COUPLING (72"W)	1
26-004821	TEE COUPLING	1
26-004981	PIPE (72"W)	1
26-004981-1	PIPE (72"W)	1
26-004981-3	PIPE (72"W)	1
26-004828	CABLE ASSEMBLY (72"W)	1
**HARDWARE REQ'D:** Qty: X 2 each, Part # 26-005444 Washer & Part # 011-518 Nut		

\* Complements for the Arm Assembly \*

Part #	Description	Qty Req'd
26-004595	ROLLER	1
**HARDWARE REQ'D:** Qty: X 2 each, Part # 018-501 BEARING		
26-004525-1	ROLLER PIN	1
26-004530-3	PIVOT PIN	1
22-000998	MAIN SPRING	1

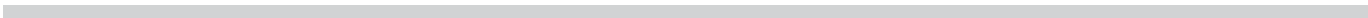
\* Complements for the Fall Safe Assembly \*

Part #	Description	Qty Req'd
26-004689	F-SAFE TILT HANDLE	1
**HARDWARE REQ'D:** Qty: X 1 each, Part # 010-003 CAP SCREW & Part # 011-545 LOCK NUT, NYLON INSERT		
26-004338	CABLE WITH BALL END	1
26-004824	CABLE ROLLER ASSEMBLY	2
**HARDWARE REQ'D:** Qty: X 2, Part # 011-080 Screw, Qty: X 4, & Part # 012-212 Washer, Qty: X 2, Part # 012-252 Washer & Qty: X 2, Part # 011-552, Lock Nut		
017-012	SPRING TENSION	1

Part #	Description	Qty Req'd
26-004979	STOPPER (BELOW LEVEL)	1
26-004829	CHAIN ASSEMBLY (1 1/2"X1 1/2"X3/16"WALL)	1
200-03461-1	LIP ASSIST SPR. SUB ASSY	1
26-004676	BLOWER (120V)	1
26-004676-1	BLOWER (230V)	1

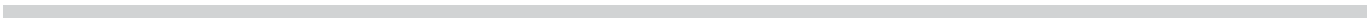
14. DOCK LEVELER TROUBLESHOOTING	
<b>⚠ WARNING</b>	Do not attempt to install, make repairs or adjustments. Only a trained and authorized service technician should perform the installation process. Contact your local dealer or distributor for assistance.
PROBLEM	PROBLEM CAUSE
Deck will not raise.	<ol style="list-style-type: none"> <li>1. The blower motor may have failed or been miswired. Repair or replace as necessary. In the case of potential miswiring, please consult wiring diagram shipped with unit.</li> <li>2. The control station is not functioning properly. Replace if necessary.</li> <li>3. Overload relay (optional) may have been tripped. If applicable, investigate and reset.</li> <li>4. Air bag may have been damaged. Inspect and repair if required.</li> <li>5. Aircraft cables may be jammed. Check cables for obstructions.</li> <li>6. Main power feed may be disconnected or a fuse may have blown. Reconnect power and inspect fuses.</li> </ol>
Deck will not lower.	<ol style="list-style-type: none"> <li>1. Debris may have accumulated under the platform. Remove and clean around the pit area.</li> <li>2. Aircraft cables may be jammed. Check cables for obstructions.</li> <li>3. Maintenance strut may still be engaged. Investigate and disengage.</li> </ol>
Deck raises slowly.	<ol style="list-style-type: none"> <li>1. Air bag may be damaged. Inspect and repair as required.</li> <li>2. Cargo and other weight sources may be sitting on the deck. Check and remove if necessary.</li> <li>3. Lift Assist spring may be disengaged. Check and adjust as necessary.</li> </ol>
The lip will not extend.	<ol style="list-style-type: none"> <li>1. Debris may be in the lip hinge. Check the hinge and clean away any dirt or corrosion.</li> </ol>
The lip remains in the extended position.	<ol style="list-style-type: none"> <li>1. Lip may be bent or damaged. Apply lubrication, and if necessary replace the lip.</li> <li>2. The lip deployment mechanism may be damaged. Conduct any necessary repairs or replace the lip.</li> <li>3. Debris may have collected in the lip hinge. Clean and lubricate.</li> </ol>
The lip strikes the rear of the truck as the deck raises, stops, or slows down, and lip does not extend in the locked position.	<ol style="list-style-type: none"> <li>1. Damaged or missing dock bumpers allow the truck to park too close to the leveler.</li> <li>2. Height difference between the dock and truck bed may be greater than recommended.</li> <li>3. The lip actuator assembly may be damaged, causing lip to begin extending too early in the cycle.</li> <li>4. The lip actuator requires adjustment.</li> </ol>
The lip will not clear the rear of the truck when attendant attempts to park the dock while the truck is parked.	<ol style="list-style-type: none"> <li>1. Damaged or missing dock bumpers allow the truck to park too close to the leveler.</li> <li>2. Height difference between the dock and truck bed may be greater than recommended.</li> <li>3. The lip actuator assembly may be damaged, causing lip to be held out too late in the cycle.</li> <li>4. The lip actuator requires adjustment.</li> </ol>

**NOTES**



**NOTES**

**NOTES**



---

***BLUE GIANT***®

85 Heart Lake Road South  
Brampton, Ontario, Canada L6W 3K2  
Phone : 905-457-3900 Fax : 905-457-2313  
[www.BlueGiant.com](http://www.BlueGiant.com)

**BLUE GIANT EQUIPMENT CORPORATION**