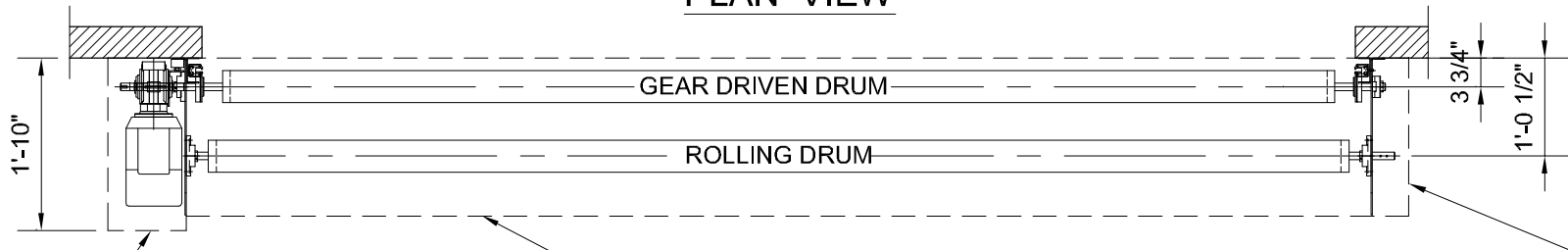
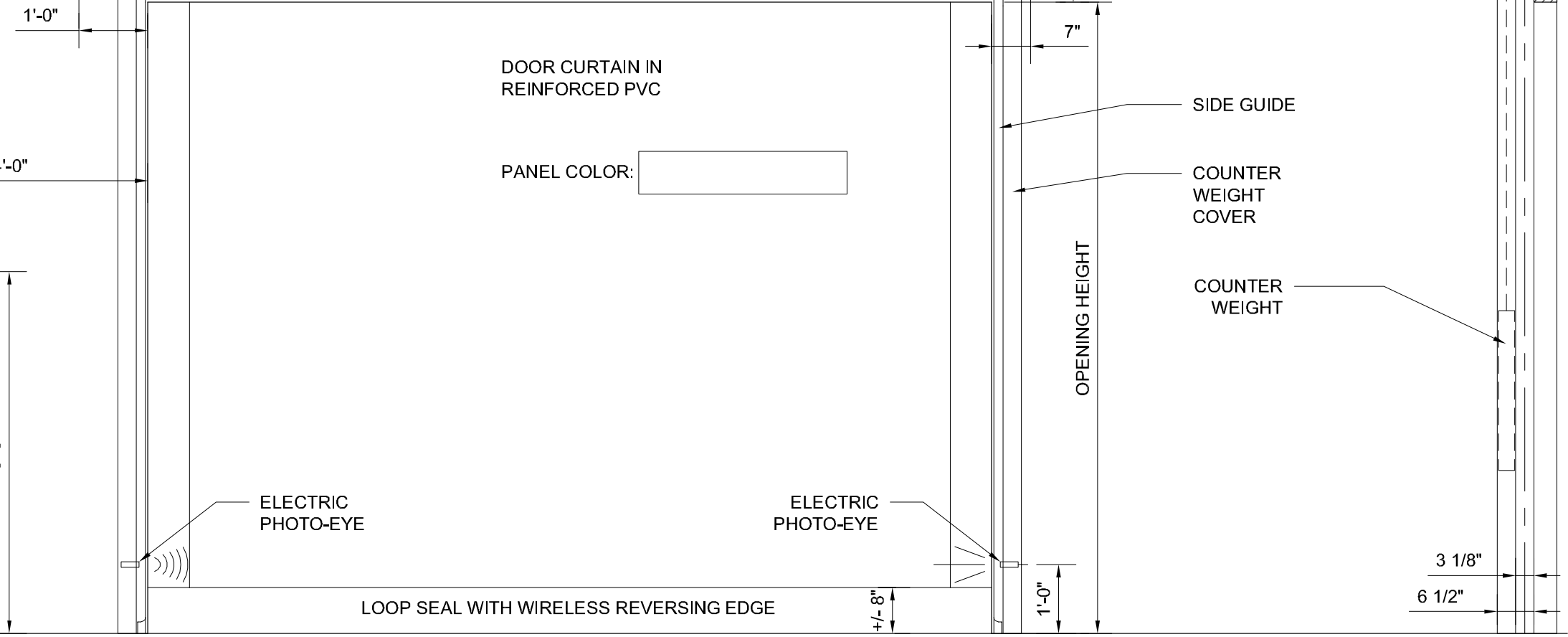
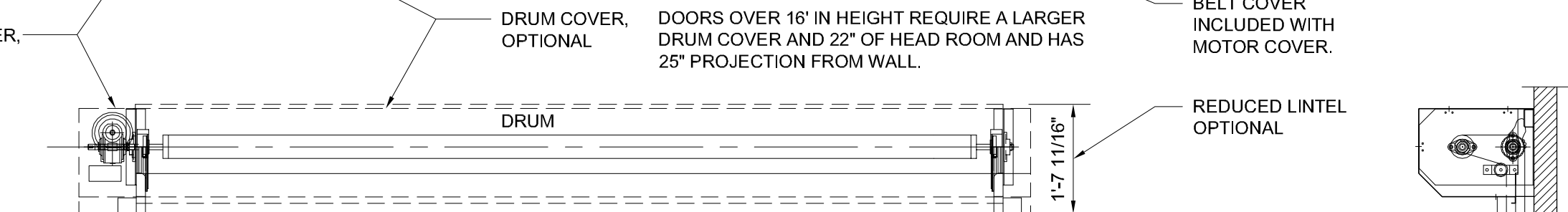


**PLAN VIEW**



MOTOR COVER, OPTIONAL  
 DRUM COVER, OPTIONAL  
 DOORS OVER 16' IN HEIGHT REQUIRE A LARGER DRUM COVER AND 22" OF HEAD ROOM AND HAS 25" PROJECTION FROM WALL.  
 BELT COVER INCLUDED WITH MOTOR COVER.



DOOR CURTAIN IN REINFORCED PVC

PANEL COLOR:

SIDE GUIDE

COUNTER WEIGHT COVER

COUNTER WEIGHT

OPENING HEIGHT

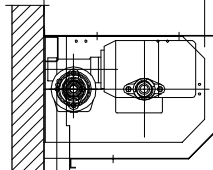
LOOP SEAL WITH WIRELESS REVERSING EDGE

OPENING WIDTH

ELECTRIC PHOTO-EYE

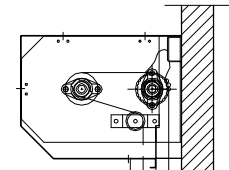
ELECTRIC PHOTO-EYE

1'-7 3/4"



DOOR POST (U PROFILE)  
 3 1/8" X 1 9/16" X 1/8"

**ELEVATION VIEW - LEFT**



3 1/8"  
 6 1/2"

**ELEVATION VIEW - RIGHT**

<b>DOOR TYPE.: M2 ALL WEATHER - LEFT HAND MOTOR</b>			
DOOR NO.:	LOCATION:	OPENING SIZE (W X H):	MIN. HEADROOM REQUIRED:

**DYNACO**  
 HIGH PERFORMANCE DOORS  
 TEL. (800) 459 1930 FAX. (800) 459 1960

<b>PROJECT TITLE</b>	
ADDRESS (CITY, STATE)	
QUOTE NUMBER:	XXXXXXXXXX
DEALER:	XXXXXXXXXX
REGIONAL MANAGER:	CONTACT NUMBER:
XXXXXXXXXX	(XXX) XXX-XXXX

DATE:	01/08/2009
SCALE:	1/2" = 1'-0"
FILE NO.:	M2-ALLWTHR-LH