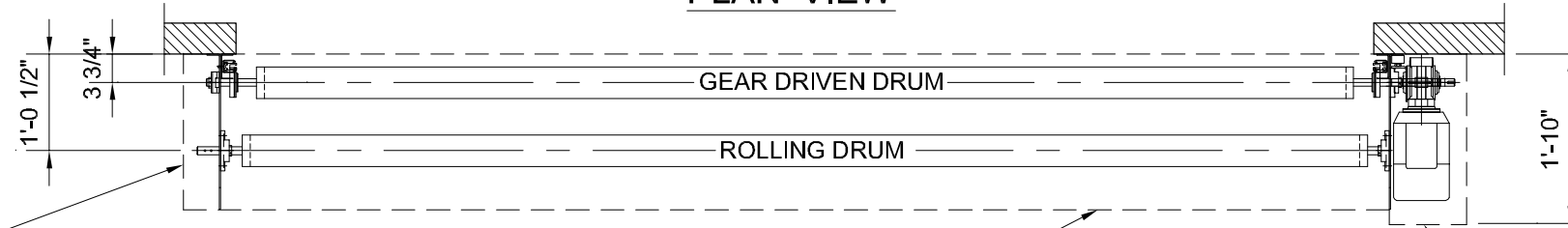


PLAN VIEW



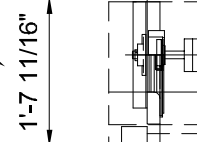
BELT COVER INCLUDED WITH MOTOR COVER.

DOORS OVER 16' IN HEIGHT REQUIRE A LARGER DRUM COVER AND 22" OF HEAD ROOM AND HAS 25" PROJECTION FROM WALL.

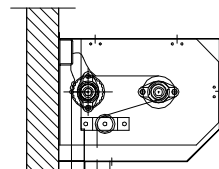
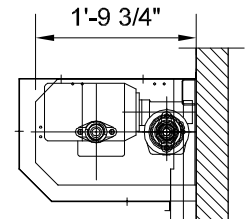
DRUM COVER, OPTIONAL

MOTOR COVER, OPTIONAL.

REDUCED LINTEL OPTIONAL



DRUM



SIDE GUIDE

COUNTER WEIGHT COVER

COUNTER WEIGHT

OPENING HEIGHT

DOOR CURTAIN IN REINFORCED PVC

PANEL COLOR:

1'-0"

4'-0"

5'-3"

ELECTRIC PHOTO-EYE

ELECTRIC PHOTO-EYE

LOOP SEAL WITH WIRELESS REVERSING EDGE

OPENING WIDTH

5 1/2"

DOOR POST (U PROFILE)
3 1/8" X 1 9/16" X 1/8"

ELEVATION VIEW - LEFT

ELEVATION VIEW - FRONT

ELEVATION VIEW - RIGHT

DOOR TYPE.: M2 CLEAN ROOM - RIGHT HAND MOTOR			
DOOR NO.:	LOCATION:	OPENING SIZE (W X H):	MIN. HEADROOM REQUIRED:

DYNACO
HIGH PERFORMANCE DOORS
TEL. (800) 459 1930 FAX. (800) 459 1960

PROJECT TITLE	
ADDRESS (CITY, STATE)	
QUOTE NUMBER:	XXXXXXXXXX
DEALER:	XXXXXXXXXX
REGIONAL MANAGER:	CONTACT NUMBER:
XXXXXXXXXX	(XXX) XXX-XXXX

DATE:	01/08/2009
SCALE:	1/2" = 1'-0"
FILE NO.:	M2-CLNRM-RH